

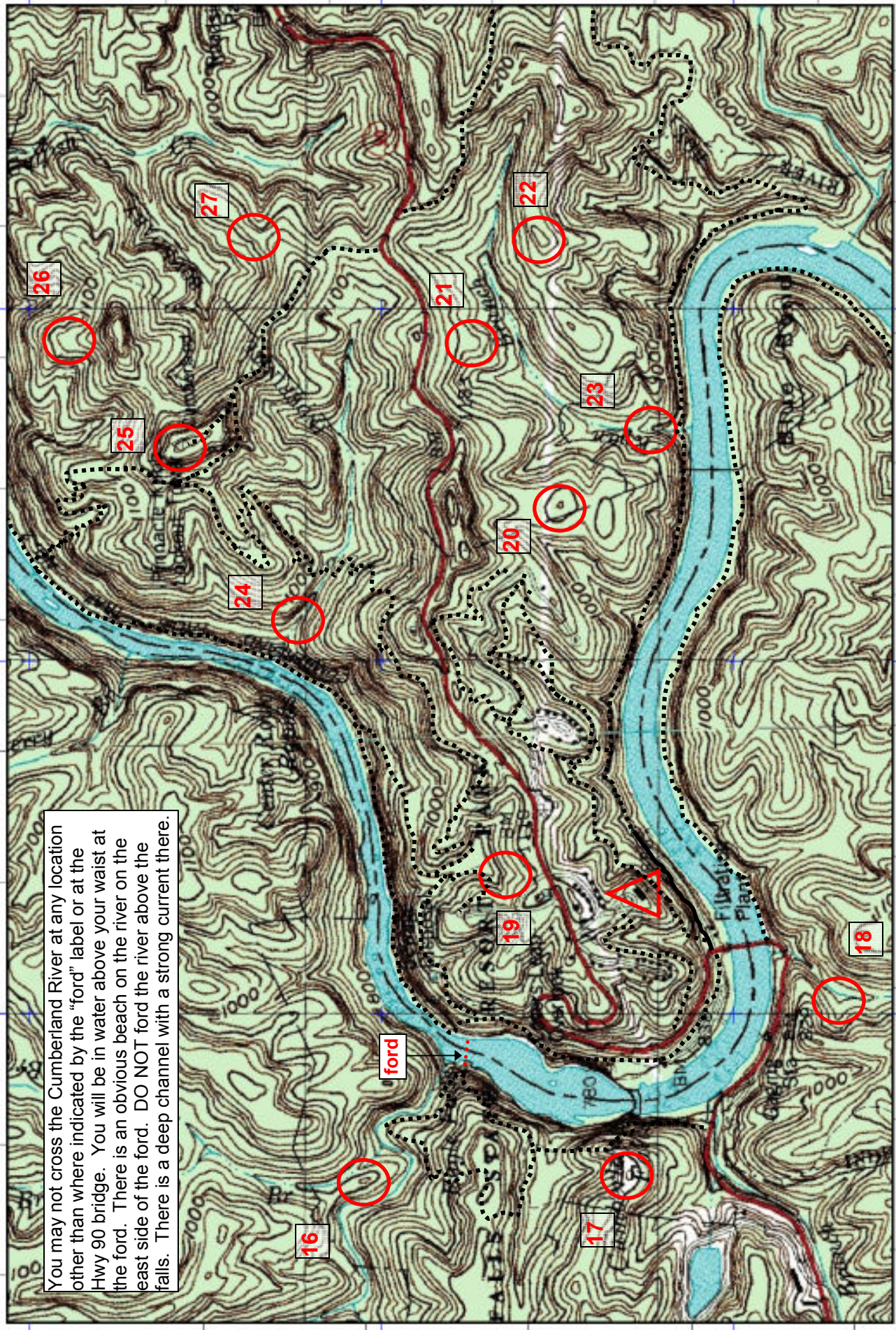
40 82 000 36°51' 36°50'45" 36°50'30" 36°50'15" 36°50' 40 81 000 40 80 000 36°50'

84°18'45" 84°19' 84°19'15" 84°19'30" 84°19'45" 84°20' 84°20'15" 84°20'30" 84°20'45" 84°21'

739 000 738 000 737 000

84°18'45" 84°19' 84°19'15" 84°19'30" 84°19'45" 84°20' 84°20'15" 84°20'30" 84°20'45" 84°21'

739 000 738 000 737 000



You may not cross the Cumberland River at any location other than where indicated by the "ford" label or at the Hwy 90 bridge. You will be in water above your waist at the ford. There is an obvious beach on the river on the east side of the ford. DO NOT ford the river above the falls. There is a deep channel with a strong current there.

Universal Transverse Mercator (UTM) Projection Zone 16
 North American Datum of 1983
 1000 meter UTM / USNG / MGRS
 Grid Zone Designation: 18S
 100 000-m Squares: 0F

1:150,000 scale
 0 0.1 0.2 0.3 0.4 0.5 Miles
 0 0.1 0.2 0.3 0.4 0.5 Kilometers

Magnetic declination of 3W at center of map on March 17, 2011